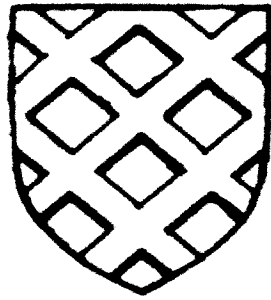


ETCHINGHAM

Annual Report 2019



Annual Parish Meeting

Thursday 16th May 2019

at

7.30pm

**in the Parker Hall, Parsonage Croft
Etchingham**

Etchingam Parish Council

Chairman's Report 2018-2019

At last year's AGM on 17 May, I was elected Chairman and Mrs Childs Vice Chairman of the Council. The council has met on the third Thursday of every month with the exception of August and December. However, it was agreed to hold an EGM in December to finalise the grants to be made to village organisations and budget strategy.

May 1919 should have seen a Parish Council election alongside the District Council elections, but since there were only 4 candidates no election was necessary. John Barnes, Mary Barnes, Simon (Sid) Barrow and Colin Boylett were duly returned as your Councillors and the vacancies will be filled by co-option.

Perhaps the most important decision taken during the year was that taken by the village as a whole via a survey. It decided that the Parish Council should not proceed with an application for a PWLB loan in order to exercise its lease option on the Cricket Field and proceed with the necessary works to create a new cricket and football facility at this time. While the Parish Council will review that decision in the course of its next term, it agreed that before doing so a working party should be set up to see if a more cost effective solution could be found that would also be acceptable to the landowners and the planning authority.

We have had to consider 15 Planning applications this year. All but that relating to the use of King John's Lodge Nursery for weddings aroused little objection in the village and we felt able either to support them or at least raise no objection. We had concerns about drainage at the former Bracon land at the corner of Church Lane and while happy with the rebuild of Court Lodge Farm, which straddles the boundary with Burwash, have yet to consider other aspects of the development that are in train. The Council had also taken an active role regarding the proposed development by Denton Homes in Burwash, objecting strongly in line with the opinion held by the Burwash Parish Council. Eventually, the developer dropped the Appeal against refusal to the relief of the local villages.

A major concern, not least in financial terms, has been the safety of the playground equipment in the Queens Gardens and Viper playground. Technically these are the concern of the Etchingam Recreation Ground Trust, the Parish Council being the Trustees, and that has enabled Colin Boylett to take forward various fundraising efforts which, with the possible addition of a Rother Community Grant, will ease the burden which otherwise would fall in its entirety on the budget of the Parish Council. We are very grateful to Colin for this. Some of the equipment has already been replaced, but there is no doubt that the Council needs to rebuild its reserves to cope with future replacements.

The major use of reserves recently has been to repair the village shop premises – the Parish Council owns the freehold. These repairs were completed in the course of the year and the CIC, then holding the lease, assisted the Parish Council to identify two new tenants, both local businesses. With the end of the lease in June, direct arrangements were entered into with both businesses.

Given these unexpected demands, we were not able to progress as swiftly as we wished with securing a proper engineering survey to see what is feasible to make the village safer, particularly for families walking to school. Discussions took place with County, but the advice was to use one of the

firms specialising in such work in order to progress matters more speedily. When we went out to tender, one of the three firms asked for a quote was singularly slow in replying. However, we can report that the work will be done in the course of the year. We are grateful for the efforts made by those outside the Council to keep this issue to the fore. Unfortunately we have got no further with the owner of Forge Cottage over the widening of the footway. While he was agreeable to the hedge being removed, he wanted it replaced by a brick wall and that was too costly to contemplate, given the budgetary situation. The issue will be revisited when the safety audit of the village is complete. Action has been taken by the Clerk over the hedges that impede passage, and the VIS outside the school has been repaired. The County feels that it is not allowed to reinstate the Scottish system of 50/40/30 mph signs that was so effective in the past in slowing traffic entering the village from the west.

We decided this year to engage in regular SLR meetings with County (the first was on 19th September) and these issues have been raised, together with other highways matters on which we can report greater success. Where problems have been identified they have for the most part been rectified speedily. However, we have made no progress in our desire to see the verges in Church Lane repaired. However the white railings have been renewed and somewhat to our surprise a safety barrier has been installed in Fysie Lane.

Speeding and the habit of traffic mounting the southern footway in the High Street continues to be a matter of concern. Unfortunately the County Council is very against installing bollards. The work of Speedwatch is, however, having a marked effect in reducing the percentage of those breaking the speed limit although some alarming speeds are still recorded. Colin Boylett's work in this regard has been recognised by a Police Certificate of Achievement. We welcome this recognition of his efforts and add our thanks and congratulations. He would be the first to add that of course it is not just him, but the team that is being recognised and we are grateful to them all.

We have also addressed the question of tree safety in both the Queens Gardens and across the parish. A full survey is expensive but will need to be carried out in this year. However, individual checks have been made, planning consents where necessary obtained, and the work undertaken by a qualified tree surgeon. One issue raised during the year about an oak tree adjacent to The Orchard led to serious discussions with our insurers about the right course of action, but in the end the professional view was that to fell the tree was likely to lead to damage to the foundations of the adjacent house. We therefore resolved that we should take no action at this time.

Thanks to Frank Brophy our footpaths are in good order and we were able to secure from Railtrack a considerable improvement to the stile where the footpath crossed the line near Forge House. The stile at Squibbs Farm has also been repaired, but only limited progress has been made in moving towards recognition of the well-used path across our woodland as a public footpath.

Frank Brophy also 'master-minded' the Village Spring Clean, including us in the Great Keep Britain Tidy which took place during the final month of this Council before the election. Our thanks to him and the amazing band of volunteers, who armed with litter pickers and wearing hi-vis vests scoured the Parish for rubbish, filling over 30 black bin liners together with various car parts and a discarded dishwasher! Our thanks are also due to Sid Barrow for managing the proper disposal of this collection.

Sid Barrow was also able to give us the welcome news of the elimination of Giant Hogweed in the parish.

Colin Boylett has successfully reorganised our website and provides us with access to documents and drawings on screen during our meetings. His wizardry is much appreciated.

Rother continues to finance grass cutting in the parish over and beyond the two cuts a year which County undertake. It remains to be seen whether that will continue.

Although not one of the largest parishes, we probably box above our weight and thanks to the efforts of ETSR have village hall provision second to none. Although the running costs do not fall on the Parish Council, our predecessors injected a substantial amount of capital, in part funded by a PWLB loan. The Parish Council is also guarantor of the lease soon to be enjoyed by the Trust. We have waited more than three years for this to be in place and I can finally report that by the time the Annual Assembly takes place, ETSR will be in possession of a 125 year lease and will have transferred £825k to the County Council. Since there are many newcomers to our village it may be as well to record that, should the school ever close, the freehold of the southern block will transfer automatically to ETSR and they will have a right to purchase the central block at a discounted price. We can welcome a reasonably satisfactory outcome to what has at times seemed an endless saga.

Although inflation will ultimately bear down on our debt, the financial and other commitments of the Parish Council continue to mean that we have to increase the precept by more than we would wish. This year we precepted for £46,000 and that meant increasing the tax for a Band D house by £16.23 a year. Even so we could not be quite as generous with our grants to village organisations and other organisations of value to the village as we have been in the past. We have approved a total of £2975. Over this term we shall need to take action to rebuild our reserves: the replacement of the playground equipment is a major priority.

Finally I should like to offer my warm thanks to all my colleagues and more particularly to those standing down, Annette Childs, Frank Brophy and Geoff Lucas. They would all I know join me in expressing our gratitude to our clerk, Paulette Barton, for the amount of energy and time she gives to the job. Her shrewd counsel is invaluable. However the best tribute I can pay to her is to report that my fellow Parish Council Chairmen think us extremely lucky to have her.

Cllr John Barnes

Chair of Etchingham Parish Council

Etchingham Parish Council to May 2019:

Mr John Barnes – Chair

Mrs Annette Childs – Vice Chair

Mrs Mary Barnes

Mr Simon ‘Sid’ Barrow

Mr Colin Boylett

Mr Frank Brophy

Mr Geoffry Lucas

ETCHINGHAM PARISH COUNCIL – FINANCIAL REPORT

While provision was made in last year's budget to build reserves to replace playground equipment, subsequent events proved the amounts to be insufficient for even the immediate repairs. The escalating prices of repair/replacement together with the very dry summer (creating problems at ground level for both safety flooring and anchoring units) meant that only the two sets of swings could be replaced in Queen's Garden. Council is looking to increase its contribution to both playgrounds but cannot fund everything so fund raising schemes involving the village as a whole are in hand, together with seeking grants.

The Public Meeting in February and the village-wide Survey, to judge public opinion as to whether or not the Council should proceed with a PWLB application to secure the lease and build the Cricket and Football pitches, resulted in a decision to defer any such application until such time as a wider use of the field be permitted under the terms of the lease and a less expensive way be found to complete the required work within the Planning Permission granted and the terms of the lease. Work on these points will recommence once the new Council is established after the local elections in May.

The two independent businesses occupying the Old Etchingham Stores both report an excellent first year's trading in those premises and, the CIC having decided not to renew its lease from the Council, negotiations are almost complete for the two businesses to rent direct from the Council going forward.

The Council aim to gradually rebuild its reserves continues but this is a slow business as a determination not to make cuts to services or to the local grants structure means a delicate balancing act between spending and saving. The increasingly nominal Bank Interest paid doesn't help. However, a full year of a market-rate rent from the Stores has made a valuable contribution to the overall financial status.

There are special community projects that do need to be added to Council spending even at times such as these. I refer specifically to the real need, expressed by the village and fully supported by the Council, to improve road safety and traffic management throughout the whole Parish but particularly around the school.

To this end the Parish Council is going to undertake an Engineering Survey conducted by experts to present to East Sussex County Council Highways for consideration. If this report is accepted by ESCC it might result in a fully funded improvement project but, and this is far more likely, we might be offered a 'match funded' deal. Even with match funding this will be an expensive operation, possibly requiring a loan, but we will have to wait and see. Tenders have been sent out to suitable contractors and a final selection will be made by the new Council. In the meantime Council has already allocated what will hopefully be sufficient to pay for the Engineering Survey from the 2019-2020 Budget. The newly formed '20 is Plenty' Group in the village is welcomed by Council which will do what it can to support it going forward.

Grants and donations continue to be made. The Tuesday Lunch Club has been included on the main list this budget year as the Reserve held in the name Gard Homes (which previously helped fund this) was fully spent last year and cannot be reinstated, but it was felt that the aim of the Club to provide an opportunity for seniors to meet in a relaxed social way for a subsidised lunch at the Bistro once a month should not be underestimated and should continue to receive support. There were no other new grants or donations added to the list.

The Neighbourhood Plan is nearing completion and due to skilful applications for the available grants and a contribution, to the cost of a specific required report that has to be undertaken, offered by the CIC the cost thus far to Council has been kept to a minimum.

As required by Law, the Accounts of the Parish Council are subject to an Internal and External Audit at year end and copies of all financial information will be available from the Parish Clerk.

Paulette Barton

Etchingham Parish Council Responsible Financial Officer

May 2019

Budget News

1. From 2019/20 Rother District Council will not receive a revenue support grant from the government and will be reliant solely on income from business rates, council tax, charges for services and income generation. We've recently been informed the government accepted the East Sussex Business Rate Pool to pilot 75% rates retention in 2019/20. We do not know the financial impact yet. The advantage will be RDC could keep more of any growth in business rates (currently we get 50%). However, the Government's fair funding review and business rates reset in 2020 may divert funding and growth in business rate income from district councils to meet pressures in other areas.
2. More detailed information can be found on the Council's website at <http://www.rother.gov.uk/article/1059/Budgets-and-accounts>.

Neighbourhood Plans

3. The Localism Act (2011) introduced several new rights and powers to allow local communities to shape new development, including the provision to prepare a 'Neighbourhood Plan' for their area.
4. Like Local Plans, Neighbourhood Plans are statutory plans and once adopted, will form part of the statutory Development Plan used for determining planning applications within the respective designated Neighbourhood Areas. So far in Rother, there are two adopted Neighbourhood Plans (Salehurst & Robertsbridge and Sedlescombe), with a further 9 – including Etchingham's - in preparation.

Joint Waste & Recycling Contract

5. A new waste contractor (Biffa) has been procured in partnership with Hastings Borough Council and Wealden District Council. The new contract will start from late June 2019 and include alternate weekly collections of co-mingled dry waste and residual waste, and a fortnightly chargeable garden waste collection service.

Housing

6. In response to concerns about the cost of housing, lack of affordable housing, and increases in homelessness and rough sleeping we undertook a scrutiny review to understand the issues and develop recommendations regarding how we might tackle these issues. We consulted on these recommendations during the latter part of last year and have since developed a Housing, Homelessness and Rough Sleeper Strategy which is currently being considered by Council for adoption from 2019/20.

Response to Anti-Social Behaviour

7. Last year we reported that in response to residents' concerns we had created a new part-time role of a community warden to work with the police to enforce low level anti-social behaviour. From March 2019 the Council will be employing two Community Wardens to take on this role and they can be contacted at pollution@rother.gov.uk.

Civil Parking Enforcement

8. During 2018 we undertook a scrutiny review on the implications of moving to civil parking enforcement throughout Rother. The County Council have recently completed a consultation exercise and we are awaiting their final proposals.

Supporting Community Projects and Events

9. Last summer we awarded a total of £66,601 in community grants to support 12 separate projects or events. These included:
 - Improvements to Battle's football pitch and the addition of a covered shelter at their recreation ground
 - Development of a community garden at Burghwood House, Hurst Green
 - A lifeboat launch vehicle in Pett
 - A community space project in Sidley
 - Outdoor cricket nets and children's play facilities in Westfield
 - Equipment for the angling club, a grant towards the cost of the Remembrance Day parade (to celebrate 100th anniversary of WW1), and a grant towards the cost of a children's music festival in Bexhill
10. A further £72,561 in grant applications is up for consideration during February 2019.

Communications

11. Over 16,400 residents receive a My Alerts email. This has reduced from over 29,000 at this time last year. Subscribers have been removed that have not interacted with My Alerts in the last 2 years, or where emails no longer exist. Additionally, subscribers have been asked to confirm their subscription. This work has been completed to ensure we comply with the requirements of the new general data protection regulations (GDPR). We continue to promote My Alerts to all residents and anticipate that numbers receiving the monthly email will increase in the future after this initial dip after taking account of GDPR.

Personal thanks

Due to changes in Ward boundaries reflected at the May Local Elections I will no longer be one of your District Councillors. Although I continue to live and take a lively part in the life of Etchingham this particular role will not be mine – but I have to say how much I've enjoyed my years in this office. I do remain as a Parish Councillor however so I'm still very much around!

Thank you for all your help and support.

Mary Barnes
Rother District Councillor
May 2019



COUNTY COUNCILLOR'S REPORT 2019

The County has had another difficult year financially, but has either delivered the planned savings or has met the overspend out of the contingency set in place in anticipation that demand led services, particularly where the service is statutory, may not come in on budget. Hence the budget continues to be delivered to plan. There is a danger that the extremely difficult financial situation in which the East Sussex County Council finds itself, in common with local government more generally, can cause us to overlook the progress it is making in delivering some very worthwhile goals. It is probably worth reminding ourselves that in the coming financial year our current expenditure will be £375 million and that we are therefore a major economic entity in our own right.

Perhaps our most important task at the moment is the leadership we are giving, not least through the Health and Well Being board, of which I am a member, to the integration of Health and Social Care. Our success in this field was praised recently by the Secretary of State for Health when he visited Hastings. I think it true to say that this proceeds more successfully where local government is in the lead, which is true of East Sussex, but what is notable is the readiness of all concerned to innovate to the benefit of those who use either the health service or care services. The overriding goal is to ensure that as many people as possible are treated in community settings and that all are treated in the right place at the right time. Obviously the aim of public health is to keep people well, but where they are not early intervention is essential and some measure of our success is that our record on health checks is second to none in the South East. Currently we are piloting Home First, a discharge system that assesses people after they have been discharged to their own home or an intermediate care bed as this seems to work best. Delayed discharges, which have at times been a major problem, have substantially improved over the year from November 2017 to November 2018, down from 12.7 per 100,000 to 10.3, and I am told that the improvement is continuing. Those attributable to social care rather than health have been brought down by 68 per cent. Where people have been discharged successfully, it is important that they do not make an unnecessary or unwanted return. In the past we have had rather too many "frequent flyers" as the NHS terms those continually in and out of an acute care setting. Here again we are moving to a better position. No less than 93 out of every 100 people discharged from hospital are still at home 91 days later. Those who are frail often deteriorate rapidly if admitted to hospital, hence it is best to ensure that wherever possible that their frailty is managed with extra care in the community and our local teams have made substantial progress to see that is the case. Against a background of large financial deficits in the NHS, which preclude "double running", progress is inevitably slower than we would wish, but it is real and ultimately it will deliver a system that is more cost effective for the country and better for those served.

I will be brief about our Children's services which rank among the very best in the whole country, with our work with vulnerable families rated as 'Outstanding', The Hastings Community Support Service, based in Bexhill, which helps people with learning difficulties to lead independent lives has also been rated 'Outstanding' recently. Partly through government policy and partly through the economies have been forced to make, we are going to be able to do less to support schools in the future, but the good work we have done in recent years means that 4/5ths of our secondary schools, 93% of our primary schools and 100% of our special schools are rated good or outstanding, levels that are now better than

the national average, and we are now going ahead with a Careers Hub to help those in education to make the right career choices.

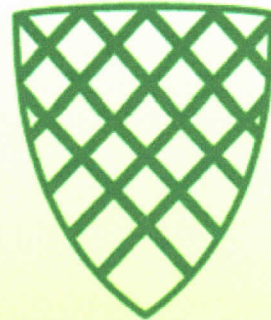
Although the condition of our roads overall is better than it has been for a good many years, and we have been able to use the capital budget to do something for minor roads for the first time this century, I cannot pretend that there is not a lot more to do. Last year, as I understand it we resurfaced 26 miles of highway and over 160 carriageway improvement schemes were completed in the last nine months of 2018. The reconstructed Heathfield High Street was completed ahead of schedule and at long last Burwash High Street was resurfaced. A good deal of capital is going into major schemes. The Newhaven port access road and the second stage of the Eastbourne Town Centre Improvement scheme have been started and these of course like improvements to the main through routes under our control are part of our regeneration strategy that looks to enhance the local economy. Our wage levels remain low (Rother is still the poorest area in England) but they are improving faster than the rest of the South East. More than 150 new jobs were created in the last nine months of 2018; and some thirty businesses were helped to move into or to relocate within the County. Some of the businesses that we helped to get off the ground are now international players. The company that we created in partnership with Rother and Hastings, 'Seachange', continues to deliver for those towns, not least in the progress being made in north-east Bexhill, where recently the northern access to the link road has been completed. Although Trading Standards is now a key player in the partnership to fight scams, and continues to deliver the 'Buy with Confidence' and 'Support with Confidence' schemes, it has nevertheless found the time to create a new Business Advice and Support Partnership, which delivered fifteen workshops in the nine months to the end of 2018.

In the course of last year we consulted upon and finalised our core offer. This was not designed, as some supposed, to identify where we could make further cuts, although some are likely to be made, but rather to educate the Government about the situation in which we find ourselves after the complete removal of the Government's general grant to local authorities and to start a national debate. Considerable lobbying took place on the back of it and a number of ministers visited East Sussex at our invitation. The term achieved national currency. Our lobbying had some effect, producing a substantial amount of one-off funding, part of which has been set aside to underpin our three year plan. We are also developing our use of AI, have become involved in a successful Business rates retention pilot, and developed ways of generating income that have enabled us to reduce the cuts we have to make in the coming year by about £12 million. We shall still have to deliver further economies of £5 million pound and have had to raise Council Tax by the maximum permitted without going to a referendum. We are looking to the Comprehensive Review, the Fairer Funding Review and the Green Paper proposals on care for the elderly, all promised by autumn, to come to our relief like the US 7th Cavalry, but planning ahead in case neither they nor further one-off offers from Government offer relief. For this and other reasons I cannot recall a time when the future for local government finance looked as uncertain as it does now, but you can be assured that unlike some other authorities, our finances are being effectively managed and the overall situation remains under control. I think and hope that, now that the Government's finances are in better shape, austerity will be coming to an end, but our lobbying cannot. Local government both needs and deserves a better means of funding its services and there is much work to do to establish just what that is.

John Barnes
East Sussex County Councillor
April 2019

ETCHINGHAM

NEIGHBOURHOOD DEVELOPMENT PLAN



Considerable progress has been made, towards the drawing up of the Plan, since the last Annual Parish Meeting, when my report included notice of a "Drop-in" session on Saturday 28th April 2018, in the Ahrens Hall. Some one hundred people came along on that occasion, to see our draft vision and objectives for the Neighbourhood Plan, and the preferred site options to provide the additional dwellings required for the village. Most - if not all - of those who attended, filled in the response sheets that were on the tables around the Hall, and the response was generally pleasingly positive.

The "Focus Groups" have all worked very hard in the past year, carrying out research on the subjects they were given: farming, environment and countryside; community, infrastructure and local economy; housing and development; and transport and traffic. They have all produced detailed reports, from which it has been possible to draw up a statement of "Draft policies" for inclusion in the Plan. That is policies that should be adopted, in coming years, when anything that is included in the Plan, or relates in any way to it, comes to be carried out. In addition to the wording of the policies, a number of photographs of notable landmarks of the village, and illustrations of particular things such as, for example, flooding and traffic problems (parking, etc.), have been submitted for inclusion in the Plan.

One of the essential aspects, that needed to be included in the Plan, was a survey of so-called "green spaces" in and around the village. That is sites that it was felt should be preserved, for particular reasons. Caroline Moore, and her focus group, duly carried out a survey and produced a list. It was then necessary that all owners of land on that list were asked for their permission for it to be openly designated as a "Local Green Space". Many refused to give that permission, for their own reasons (mainly because they feared it might lead to trespassing on their land), but the number of green spaces that qualified for possible inclusion (meeting standards set out in the regulations governing neighbourhood plans) very much reflects the rural nature of our beautiful village.

Our consultant, Donna Moles, has prepared a draft of the Plan which is looking very good, and very professional. She, of course, knows better than we do what the independent examiner will expect to see (or not to see) in the final version, and we rely very heavily on her to guide us. She has submitted the draft to Rother District Council, for their initial comments, and the next stage will be the presentation of the actual Plan to the people of the Village, for consideration over the necessary 6-week consultation period.

There are still a number of formalities to be met, before the final Plan can be drawn up, and approved - by the people of the village, by Rother District Council, and by an independent examiner - but the Steering Committee will continue to work hard to try to bring the whole procedure to a conclusion, as quickly as possible.

Frank Smith (Chairman - Neighbourhood Plan Steering Committee)
May 2019



COMMUNITY SAFETY

The Council portfolio for Community Safety covers several areas that relate to the safety and wellbeing of village residents, as detailed below.

Police:

As you will probably be aware, villages do not have a dedicated PC or PCSO, all the PC's and PCSO's for each district cover the whole of that district and are allocated to where they are needed each day. So, although you do not see the regular presence of an officer in the village you can still contact a PCSO or PC by using the Police Non-Emergency number **101** and asking for a local officer to contact you, if you prefer to use email; 101@sussex.pnn.police.uk

As always – if reporting an urgent matter, do not hesitate ~ call **999**

More information and help available on the Sussex police website www.sussex.police.uk

Neighbourhood Watch:

Etchingham does not currently have an active Neighbourhood Watch scheme operating, I do however still receive NHW information from the Rother NHW Co-ordinator and will put anything that is relevant to Etchingham on the e-bulletin, social media and village notice boards.

Community Speedwatch: See the separate report for Speedwatch

Flood Warnings:

We have been lucky in recent winters, with no serious flooding, during last winter we have only had a couple of Flood Alerts, and none of the more serious warnings.

If any alerts or warnings are issued I am registered, on behalf of the Parish Council, to receive all warnings and updates as soon as they are issued. I can then make sure that residents in parts of the village that are at risk are aware of the current situation. As alerts or warnings are received the details are posted and regularly updated on the village website, the details are also sent out on the e-bulletin when possible and are usually posted on some of the village Facebook and Twitter pages.

If you have any queries on community safety issues, please do not hesitate to get in touch.

Cllr. Colin Boylett, portfolio holder for Community Safety.



ETCHINGHAM COMMUNITY SPEEDWATCH

Co-Ordinator; Colin Boylett 01580 819532 07484 635014

etchinghamsspeedwatch@gmail.com <https://www.facebook.com/etchinghamsspeedwatch>

<https://twitter.com/etchspeedwatch> <https://www.communityspeedwatch.co.uk>

Community Speedwatch is ***not*** about getting people reported and fined, it is an educational tool designed to educate drivers to drive at appropriate speeds in speed limit areas by regular deployment of Speedwatch operators with speed detection devices. However, any vehicles recorded at more than the allowable limit of 35mph are referred to the Police and the vehicle owners receive a Police warning letter, persistent offenders may also get a visit from a Police Officer and possible further action may be taken.

The Etchingham group has now been operating for over four years, since January 2014. Since then the group has run a total of 1236 roadside sessions that have recorded over 11,000 speeding vehicles and more than 8,900 have received Police letters, several have also been referred to the Police for further action, the fastest speed recorded so far has been 72mph.

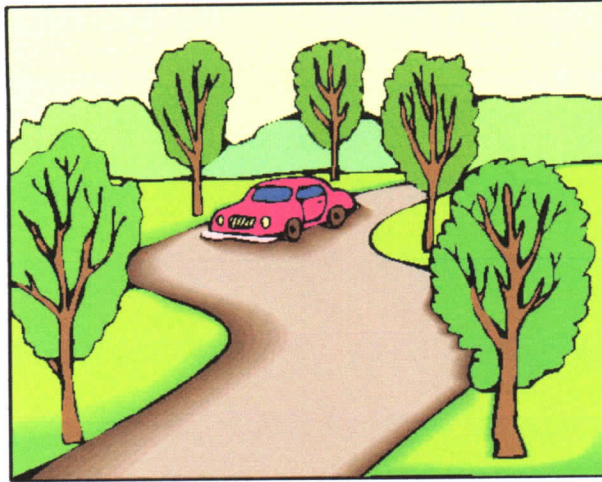
During the period April 2018 to April 2019 the group ran 179 sessions recording 1,057 speeding vehicles with 1,000 Police warning letters sent out, the highest speed recorded during the year was 57mph.

The group currently has seven volunteers, some are not able to do many sessions for health reasons or other commitments. If the group had a few more volunteers available more sessions could be run each week, or alternatively the same number of sessions without using each volunteer too often. The equipment is easy to use and only very basic training is involved, so anyone who would like to consider joining the volunteers, even if it is only for an hour occasionally, first use one of the contact methods above for details of how to sign up.

REMINDER – The speed on the road signs is the **LIMIT** ***not*** the **TARGET!**

Cllr. Colin Boylett – Portfolio holder for Community Safety and Speedwatch Co-ordinator.





HIGHWAYS

All repairs and maintenance on the roads in the parish, including the verges, pavements and signage is the responsibility of East Sussex Highways. There is now a dedicated highways website and all reports of items needing repair or maintenance should now be made on the website <http://www.eastsussexhighways.com> .

If you do not have internet access, or you consider the fault/repair requires urgent attention, you can phone your report to 0345 6080193

Use the contact methods above to report issues relating to roads, pavements or verges as soon as you are aware of the problem. Please also bring it to the attention of the Parish Council send the details to the Parish Clerk or one of the Councillors who hold the Highways portfolio, currently Cllrs John Barnes and Colin Boylett, or speak to any Parish Councillor.

If it is something that might require discussion at a Parish Council meeting, make sure it is reported to the Clerk at least ten days before the next meeting to make sure it is in time to be added to the agenda, and for Councillors and the Clerk to research information.





Etchingam

'Etchingam Village Website'

www.etchinghamvillage.co.uk

The village website is provided by the Parish Council as a means of communicating Parish Council and village activities and information to village residents, potential new residents and visitors. The pages are updated on a voluntary basis by a Councillor to keep the cost of providing the website as low as possible.

The agenda for all Parish Council meetings is published on the website about a week prior to the meeting, the minutes of all meetings are also on the site, all the agendas and minutes of previous meetings are archived on the site, all meetings for the last five years are archived, so visitors can search for information from historical meetings.

Contact details, telephone and email, for all Councillors and the Clerk are on the site.

Information on village events and organisations can be found on the website, there is a section with details for the Church, and any interesting local information can be added, items for adding to the website can be sent to etchinghamvillagewebsite@gmail.com

The website does not take commercial advertising, but there is a section for the details of local businesses, if you have a business based in Etchingam, or providing a regular service to Etchingam residents. There is no charge for adding your details, just email the details you want included to etchinghamvillagewebsite@gmail.com, details of businesses not based in Etchingam are included at the discretion of Admin and/or Parish Council.

If your organisation or business has details on the site you might like to check the details to make sure all the details are current, and send an email with any changes.

The website also has a Facebook page where updates are added when new items are added (www.facebook.com/EtchingamWebsitePage) and Twitter account ([@etchweb](https://twitter.com/etchweb))

The Parish Council also has a Facebook page (www.facebook.com/etchinghampc) and a Twitter account ([@etchinghampc](https://twitter.com/etchinghampc))

Cllr. Colin Boylett, portfolio holder for Council Communications.

Rye & Battle Observer

VILLAGE VOICE COLUMN

Every week in the Rye & Battle Observer you will find the "Village Voice" section, with weekly contributions provided by a local resident in each village with news and information from their village.

For several years I have been the village correspondent for Etchingham and I am always looking for news and information to include each week. I can include any information about your clubs and organisations, events, fund raisers, special news and anything that might be of interest to other village residents. I do not have any limits on article size, so send anything you want, I may need to adjust slightly to meet the newspaper requirements, but can normally use anything you send.

If you miss an edition of the paper the Village Voice columns can be read on the Rye & Battle Observer website

<https://www.ryeandbattleobserver.co.uk/news/village-voice>

If sending details of your event or fund raiser send the details as soon as you have them available, then I can include in the column well before the event to give people a chance to put the date in their diary, then include again a few times nearer the date, if you wait until the week before it will only get mentioned once.

I normally require your information to arrive by 10pm on Monday to include in the Friday edition, e-mail is the best method to use to avoid errors during copying, but you can get the details to me by phone or deliver to my home address.

Colin Boylett 01580 819532 07484 635014
colin.boylett@gmail.com

2 Park Farm Close, Etchingham.

ETCHINGHAM C E SCHOOL 2018 – 2019

We have had another exciting and fruitful year at the school. Our pupils love learning and they contribute to the design of the curriculum. We have completed 2 Learning Journeys and are about to embark upon the final one: 'REACH FOR THE STARS.' This will include the 50th Anniversary of the Moon Landing and also the 150th anniversary of the birth of Sir Henry Wood. The children will therefore have musical experiences woven into the curriculum this term, which fit with the 'SPACE' theme. They are very excited!

A taste of life at Etchingham C E School in images 2018 - 2019:

Making Christmas baubles



Outdoor learning – a whole school event



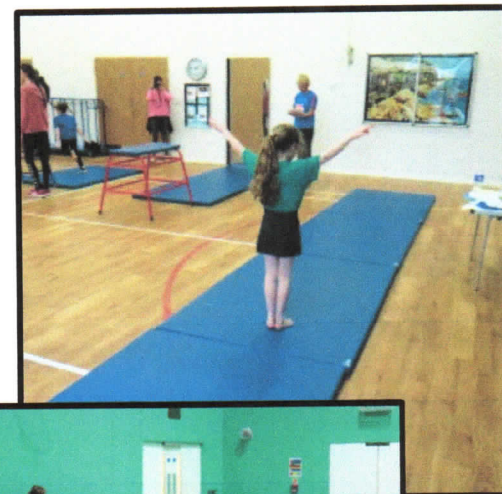
Learning with our parents



Composing Rainforest Music and recording it!



Inter-school sporting opportunities



Working with an Olympian to get fit!

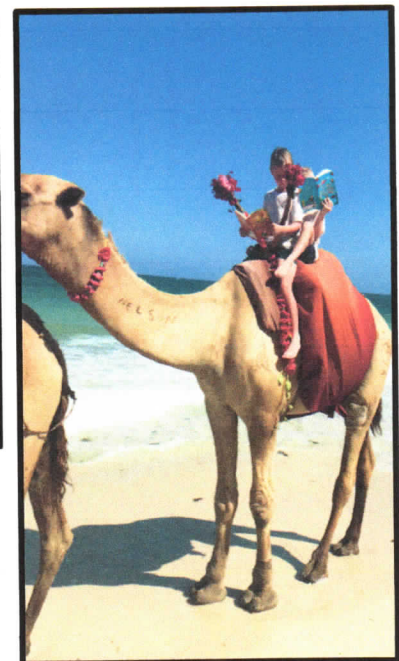
Commemorating the centenary of the Armistice



Christmas Celebration KS2 – song, dance, narration, Talk for Write, all of which communicate the story of the birth of Jesus



World Book Day At Etchingam we love reading! Sometimes we read in unusual places!



PLAYGROUNDS



You will be aware that following safety inspections last year, some of the play equipment in Queen's Garden and the Viper site had to be taken out of use.

Parish Council has replaced some items, now Etchingham Recreation Ground Trust (ERGT) is fundraising to replace more items. ERGT is a charity *Registered Charity No. 1093289* set up to manage Queen's Garden, and the Viper site, the Parish Council is the ERGT Trustee body.

You can help raise funds when you spend money online, at no extra cost to you, by joining "Give as you Live" join at <https://giveasyoulive.com/join/erqt>, then when you shop online log in to Give as you Live first and use the link there to go to the site you are buying from, a small % of the purchase price will be donated to ERGT, at no cost to you. There are over 4,000 websites registered with Give as you Live. It is not just shopping, if you are booking a holiday or hotel, or buying insurance, check the Give as you Live site first, some of the holiday firms give quite generous donations, and it does not cost you extra.

You can also make a donation online at <https://www.everyclick.com/etchinghamplaygrounds> if you are a UK taxpayer please opt for Gift Aid so the fund gets an extra 25% from HMRC.

Details of both schemes on the village website <https://www.etchinghamvillage.co.uk/playgrounds>

If you do not have the ability to donate online you can contribute with a cheque payable to "Etchingham Playgrounds" deliver to the Parish Office at Parsonage Croft. Or you can leave cheques or cash in a sealed envelope clearly marked "playground appeal" at the Post Office.

So far the fundraising schemes have raised just over £1,000, if a lot more people join 'Give as you Live' and use it whenever they spend money online the total will soon grow.

An application was made to the 'Tesco Bags of help' scheme, unfortunately that was not successful, an application has been made to the Police Property Act Fund, we are waiting to hear if that has been successful.

It is planned to create a fundraising team to find ways to generate funds, details will be on village notice boards, the village website and social media.

For more information or to offer help - contact;

The Parish Clerk 01580 819048 or Cllr. Colin Boylett 01580 819532

or email; etchinghamplaygrounds@gmail.com



Etchingham Trust for Sports and Recreation

Report to the Parish Assembly 2019

The village halls have now been operating for over four years.

During the period April 2018 to April 2019 very good use of both the Parker and Ahrens Halls has continued to be made by a varied group of regular users, particularly during the school week. The halls continue to host an interesting variety of activities run by our regular hirers ranging from sports to yoga, health and well-being to social groups catering for all ages. We would encourage all users and potential users of the halls to visit our website - www.etchinghamvillagehalls.co.uk for more information and to check availability if you wish to hire the halls for an event.

The practice room continues to be used infrequently and we would like to remind everyone that it offers an excellent space for small meetings including one to one learning opportunities.

Whilst our income during the year again has been sufficient to cover the running costs of the halls, the Trustees recognised that it was not sufficient to cover the administrative costs of running the halls and ETSR. In addition, the Trustees wish to buy further equipment and are committed to building a long-term maintenance reserve.

There have been various fundraising events in the past year to bridge this gap and the Trustees would like to thank all those who have stepped forward to give talks - in particular Barbarann Lang Smith, Ray Williamson and Nick Smith. Thanks also goes to those who have become part of the catering team for the quiz night and to Mary Barnes and Eleanor Knowles, for what is now becoming their annual plant sale for us, once again a hugely successful and enjoyable event.

Run by Paul Stott, the 100 Club has contributed nearly £4,000 to our funds in the past year, with prize money payments of over £1,620. 31 different villagers have been prize winners during the year and several have returned their prize to further help our fundraising efforts. A few spaces remain for new members who would like to join the draw.

ETSR is now one of the charities benefiting from purchases via Amazon. Please do purchase anything from Amazon using their Amazon Smile website. It costs nothing to use but gives ETSR a percentage of what you purchase.

Further fundraising will continue during the next twelve months and if anyone wishes to support ETSR by organizing an event please do contact Catherine, our administrator, on admin@etchinghamtrust.org.uk

It is very disappointing to again report the slow progress regarding completion of the Lease. The Trust continues to operate the halls under a verbal licence from the County Council. We have been unable to transfer our capital contribution to the County Council and it remains ring-fenced in our accounts- effectively a dedicated reserve. ETSR have completed everything that they have been asked to complete in a timely manner including the signing of the lease. However completion has yet to take place as we are now awaiting the resolution of a related matter between the Diocese and the County Council to which we are not a party.

As previously reported the Joint Management Committee with the school continues to meet regularly and takes its decisions consensually. Its discussions have always been amicable and constructive and we would like to give particular thanks to Greg Coleman who manages the entire building and who has been tireless in seeking ways to reduce costs.

At the AGM in November 2018, John Barnes (Chairman), Nicky Menzies, Paulette Barton and Nick Smith were re-elected as Trustees and Paul Stott and Steve Millea continue as Trustees and the nominated Parish Council Representatives.

Finally, ETSR would like to thank everyone who has supported the halls during the year.

Patrons

Tom Avery
Robert Bathurst
Harry Hill
The Lord King of Lothbury, GBE
Charles Moore
Sir Frank Sanderson Bt. OBE
Rt.Hon. The Lord Young of Graffham, DL

Trustees: John Barnes - Chairman, Paulette Barton, Nicky Menzies, Steve Millea, Nicholas Smith, Paul Stott;
Catherine Richards - Administrator, contact: Email: admin@etchinghamtrust.org.uk Tel: 07855 239848
Correspondence Address: Etchingam Trust for Sports and Recreation, Etchingam Community Hall, Parsonage Croft, Etchingam
East Sussex TN19 7BY

Registered charity number: 1076642



Report on Etchingam Festival 2018

We began the year with two extra events which we felt would appeal to larger numbers of village residents. Firstly we held a Ceilidh on St. Patrick's day which was very popular with all ages from 8 to 80 plus all of whom had a very jolly evening, despite the unseasonable snow. A month later we held a Cuban Salsa evening, also a great success, with people sitting outside in 21 degrees.

The Festival opened on 30th June with a return visit by Instant Sunshine, a renowned and very amusing cabaret group.

On July 1st we welcomed a first visit by Rother Piano Trio playing a very varied programme from Hummel to Rachmaninov. The 3rd of July brought the welcome return of our delightful and talented friend, the pianist Florian Mitrea, with the equally talented Atea Wind Quintet.

On 5th July we hosted a recital by Daniel Grimwood, an internationally renowned and fluent pianist, with a very interesting programme. Our Saturday Opera Supper, given by final year students from the Royal Academy of Music, was enjoyed by a full house.

On the final Sunday we had a return visit by the very young musicians from Trinity College who displayed amazing musicality. Etchingam has become a first public performance space for many of these children, something we wish to encourage.

Currently our financial situation is sound and therefore we will not be asking for a grant this year. We have been able to make a donation of £500 to the Etchingam PCC in appreciation for the use of our magnificent Parish Church.

Mary Newington

April 2019

ETCHINGHAM FRIENDSHIP CLUB

This Club was formerly called THE DARBY & JOAN and was founded 61 years ago for villagers of 55 years and over.

We meet at 2.30pm on the 4th Wednesday of the month in the Parker Hall. We endeavour to arrange outings for two of these months.

On our home meetings we enjoy talks/slides/quizzes/music and our entertainment is always followed by a delicious tea including the very popular Strawberry Tea, when they are in Season!

The cost of membership is £10 per year and new members are most welcome

Please contact Julia Barrow at 01580819475 for more information

a list of the 2019 Events is also available.

ROTHER VALLEY LADIES GROUP

Our group continued to enjoy a varied and interesting programme of talks and outings in 2018.

The programme for 2019, already begun of course, promises to be equally enjoyable.

We are very grateful for the support of Etchingham Parish Council which has enabled us to subsidise the cost of our coach outings.

If you'd like to join us you will be made very welcome so do get in touch with Greta Crane

on 01580 819304 for further details.

FRIENDS OF BURWASH SURGERY

During the course of the past year (2018), little has changed, and we continue to try to help the surgery in the same way(s) as we have for many years. With the help of generous donations and bequests, we finance the purchase, by the surgery, of equipment considered essential by the doctors, but which cannot be financed by the NHS, for example we have, in the past, financed the purchase of a defibrillator, blood pressure monitors, resuscitation kits, etc., etc.

At the request of the surgery, we deliver medication to patients unable to get to the surgery. We also take patients to local hospitals or consultants, and return them to their homes, when - for various reasons - it has not been possible to use Hospital transport, and they cannot find friends or relations to drive them, nor use public transport. The only condition is that they make their request for transport via the surgery. This service is provided free, by volunteer drivers, although a donation to the Friends is always appreciated.

There has again this year been little change in membership, this being effectively all patients, but what is most important to us is drivers, the number of which has - perhaps inevitably - fallen a little. As always we could do with some more volunteers, for whom we offer to pay expenses, if required. In the course of this past year, we have persuaded our volunteer drivers to have DBS checks, essentially for the security of the surgery, as well as the committee.

Contacts

Chairman: Frank Smith langsmith_@hotmail.com

Secretary: Sue Mumford susanmumford6@mypostoffice.co.uk

Footpaths in Etchingam

Etchingam is fortunate to have many miles of footpaths. This allows many different circular walks within and around the Parish. It's also possible to walk across fields to many local villages including Ticehurst, Hurst Green, Robertsbridge and Burwash. Walking is good exercise which helps people live longer, remain healthy and live a longer life and we would encourage people to make use of our footpaths. These footpaths are shown on Ordnance Survey maps and there are a number of walk descriptions available on the village website. We are grateful to landowners who maintain the footpaths, stiles and gates across their land as these footpaths allow access to the beautiful countryside and woods of the AONB. East Sussex holds a map showing the permanent rights of ways (PROW) which is available online (Search for "East Sussex Definitive Map"). There is a legal right to pass along the routes shown on the definitive map.



Bluebells in Burgh Woods

Much of Burgh Woods is owned by the Bellhurst Nature Conservation Trust who very kindly allows access across the many paths within the woods. The Parish Council is working with the trust to get the footpath from the corner of Fysie Lane and Burgh Hill into Burgh Woods designated as a Permanent right of way, which would mean that this path will be available for future generations. Work is progressing to regenerate Burgh woods, by clearing laurel and dead trees, making space for new growth, so walkers need to be careful to keep clear of areas where there is work going on.



Etchingam has the highest waterfall in E Sussex

